

Manual DASNT V3

1. Conditions

- Suitable models: ecom-CN, ecom-EN, ecom-J2K(N), ecom-JN, ecom-KD or ecom-SGP
- PC with operation system Win2000 and higher and Microsoft Net Framework 2
- Data cable (**use special cable from rbr only !**)

- RS232:

- ecom-CN:	data cable	Item no.: 52179
- ecom-EN:	data cable	Item no.: 52694
- ecom-JN:	data cable	Item no.: 53532
- ecom-J2K(N):	data interface	Item no.: 1040031
- ecom-KD	data cable	Item no.: 53532
- ecom-SGP	data cable	Item no.: 53532

- USB:

- ecom-CN:	data cable	Item no.: 52179 + 51521
- ecom-EN:	data cable	Item no.: 51521
- ecom-JN:	data cable	Item no.: 52162
- ecom-J2K(N):	data interface	Item no.: 32000024
- ecom-KD	data cable	Item no.: 52162
- ecom-SGP	data cable	Item no.: 52162

2. Install software

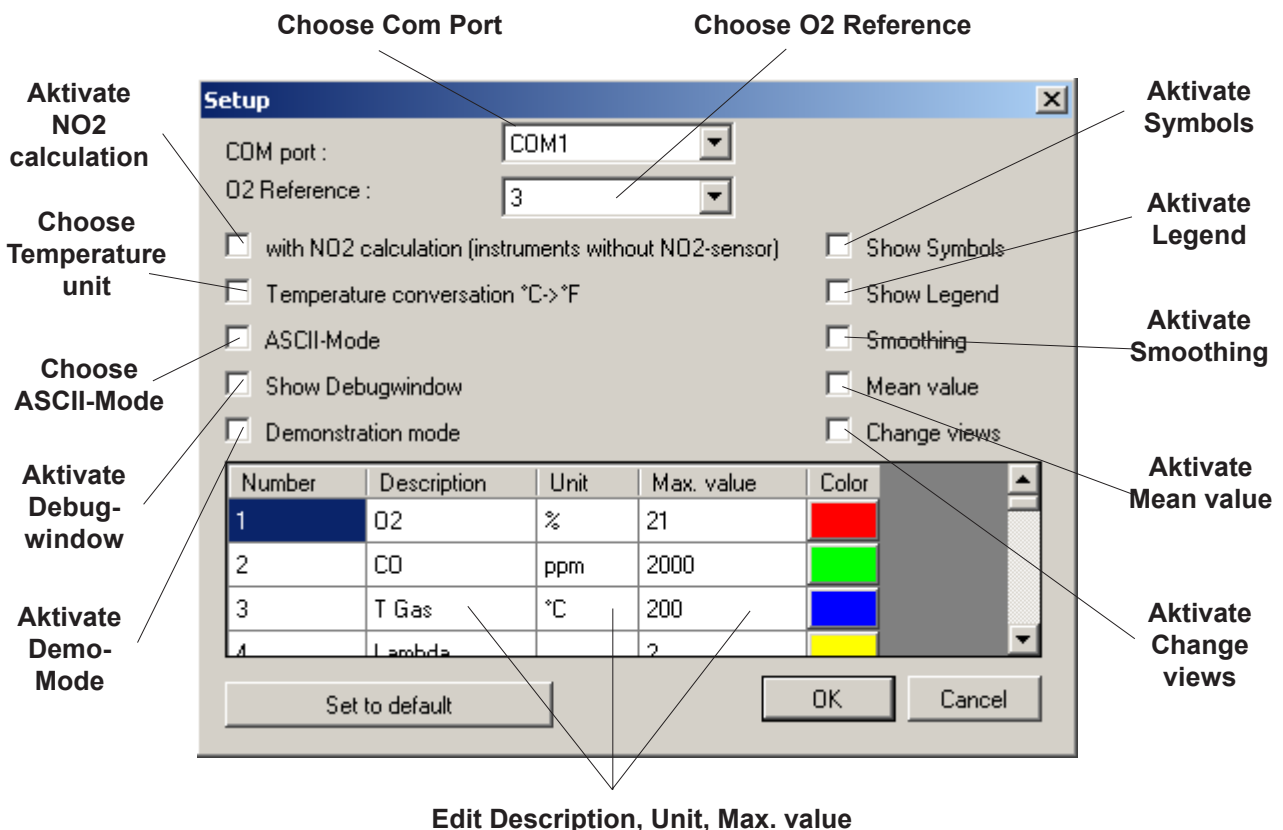
- Install software from product-CD.

3. Start software

- Start by calling up „Start“ / „Programme >“ / „DAS NT 3“.

4. Adjustments

- Select „File“ / „Setup“.



Adjustments and their meaning:

Choose Com Port: Select serial Com Port for the data transfer to the instrument.

Choose O2 Reference: Choose O2 Reference to standardise measured values.

Aktiviere NO2 calculation: Possibility to estimate the NO₂-content (= 5% of the NO content) without NO₂-sensor.

Choose Temperature unit: Aktivierung von unit °F (only analyser with unit °F).

Choose ASCII-Mode: needed for ecom-KD und ecom-SGP:

- ecom-KD: Adjust at the analyser „Datenlogger/Parameter/Ausgabe RS232“ to 1 sec. and switch „Datenlogger/Daten senden“ to „Yes“.
- ecom-SGP: Adjust at the analyser „Programmieren/Speichern-Druck-Zeiten/Ausgabe RS232“ to 1 sec. and switch „Programmieren/Datenübertragung“ to „Yes“.

Aktiviere Debugwindow: Shows the Debugwindow with the announcement of software errors.

Aktiviere Demo-Mode: Shows Demo-values.

Aktiviere Symbols: Each line in the process view gets a symbol.

Aktiviere Legend: Shows the description of each line in the process view.

Aktiviere Smoothing: Aktivates the smoothing of each line in the process view.

Aktiviere Mean value: Forms the average value from all past values.

Aktiviere Change views: Aktivates automatic switching between the different views every 10 seconds.

Edit Description, Unit, Max. value: These fields can be changed by overwriting (select field with mouse-click - activate editing with second mouse-click).

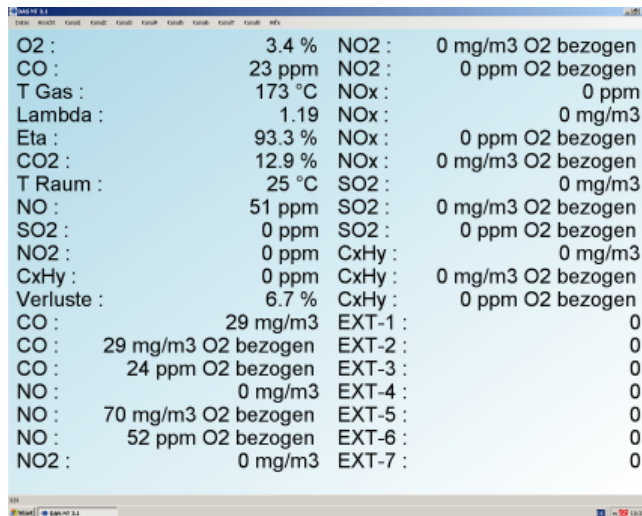
5. Start data transfer

- Switch analyser on and start gas analysis.
- Connect PC and analyser with data cable after calibration (measured values shown at PC screen).

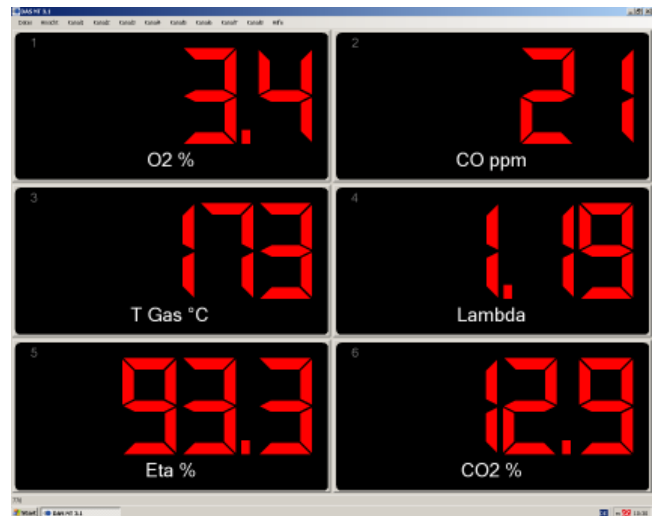
6. Change view

- Choose „View“ to change between the following views:

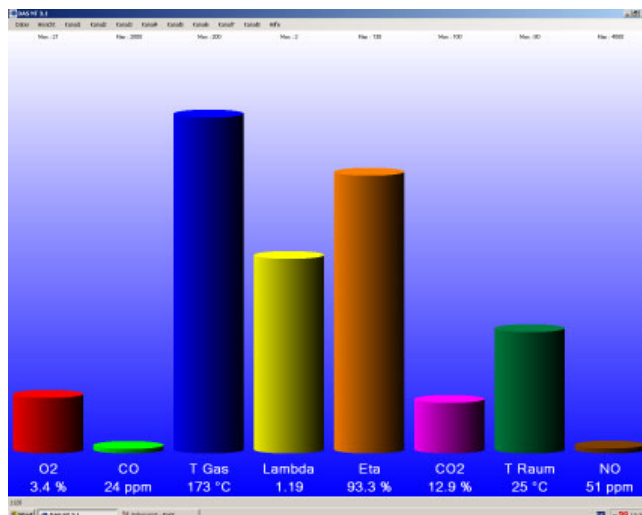
Overview



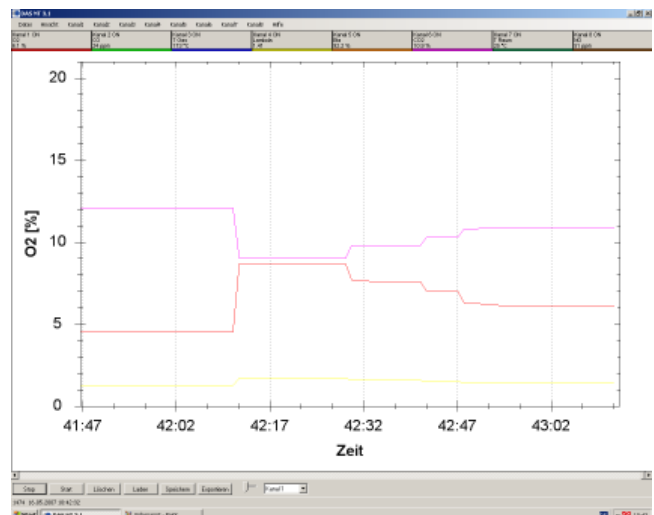
Giant display



Bargraph



Process



7. Adjust channels

- The allocation of the channels 1 to 8 is freely selectable (adjust with Ch1, Ch2, etc.).

8. Data logger

- If the view „Process“ is chosen, the software starts recording the measured values (each second a data record).
- The recording can be interrupted and continued with the keys "Stop" and "Start".
- By pressing the key "Clear" the recorded values are deleted and a new recording phase begins.
- By pressing the key „Save“ the recorded values are stored (DASNT-format *.das) and they can be called up again with the key „Load“.
- By pressing the key „Export“ the recorded values are stored as csv- or xls-file.

- the sliding control beside the key "Export" scales the time axis stepless. If the sliding control is moved with the mouse to the right, the time interval of the process view becomes larger (sliding control to the left - time interval becomes smaller).
- the scaling of the y-axis depends on selection of the channel right beside the sliding control. The solution of the y-axis is adjustable by change the maximum value of the channel (Menu „Setup“)